

TERA® S/FTP TRUNKING CABLE ASSEMBLIES

Siemon's TERA copper trunking cable assemblies provide an efficient and cost effective alternative to individual field-terminated components. Combining factory terminated and tested TERA outlets and fully shielded Siemon category 7_A TERA cable, Siemon TERA trunking cable assemblies offer industry leading performance to 10 Gb/s and beyond. Standard configurations also help maintain consistent cable layout, facilitate efficient moves, adds and changes and significantly reduce scrap versus typical field installation.



TRUNKING PRODUCTS

Each leg is labeled for proper module orientation

Utilizes high quality category 7_A S/FTP Siemon cable

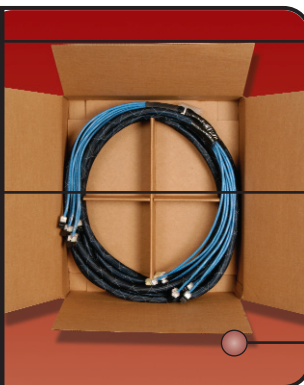
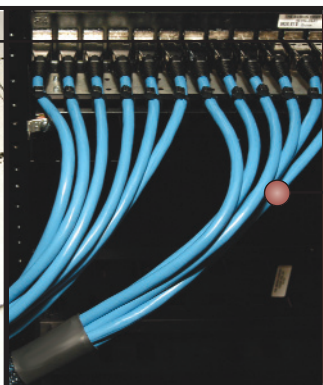
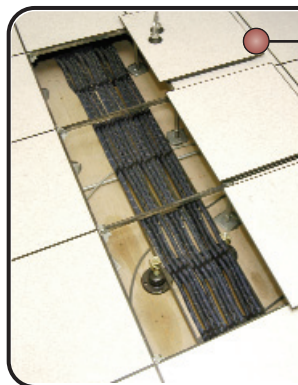
Utilizes TERA outlets, factory terminated and tested for performance to 10 Gb/s and beyond

Six-leg, double-ended design presents a smaller profile when pulling

Unique breakout kit creates optimal cable orientation and limits cable crossing

Each cable assembly is coded with a unique identification number for administrative purposes

High-strength closed mesh sheath ensures snag-free handling



Ideal for Data Center installations where raised floor and ladder rack environments accommodate easy installations

Straight Cut aligns TERA outlets for optimal snap-in installation into TERA-MAX® patch panels

Each assembly is packaged individually to protect factory terminations

CONNECTING THE WORLD TO A HIGHER STANDARD

WWW.SIEMON.COM

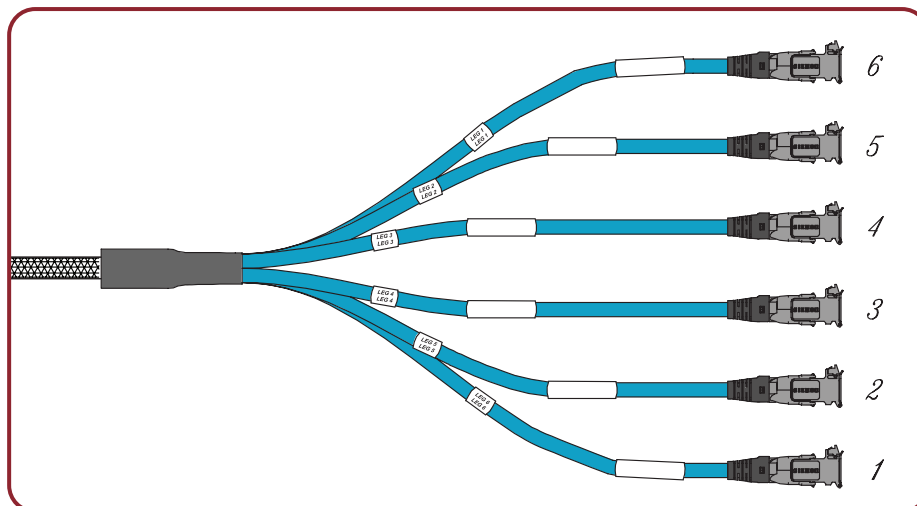


PRODUCT INFORMATION

TERA® S/FTP Trunking Cable Assemblies:

Major Product Features:

- 6-leg, double ended construction
 - Presents a smaller profile when pulling
- Straight cut
 - Allows left, right or center exit
- Terminated with TERA outlets
- Unique closed mesh sheath
 - Ensures snag-free handling
 - Material properties match the cable jacket
- Robust breakout kit
 - Maintains cable orientation and prevents crossing
- Pre-attached pulling eye to aid installation



Six Leg Trunk Cable:

- TJRD6E-F7F7(XXX)(X) Category 7/class F, S/FTP, riser rated (CMR) cable, double ended TERA outlets, blue jacket, 1000MHz
- TJPD6E-F7F7(XXX)(X) Category 7/class F, S/FTP, plenum rated (CMP) cable, double ended TERA outlets, blue jacket, 1000MHz
- TJLD8E-F7F7(XXX)(X) Category 7/class F, S/FTP, LSOH rated (IEC 60332-1) cable, double ended TERA outlets, violet jacket, 1000MHz

Use (XXX) to specify length*:

009-120 ft. in increments of 3 feet

003-36m in increments of 1 meter

Use (X) unit: F = feet, M = meters,

Other lengths available upon request.

* Lengths below 24m (80 ft.) are coiled and packed in box. Longer lengths ship on reels.

Note: These products are made to order. Call for lead time and part number availability in your region.

Because we continuously improve our products, Siemon reserves the right to change specifications and availability without prior notice.

MAX®, TERA® and 10Gip™ are trademarks of Siemon

For related product information request Spec Sheet(s):

TERA-MAX Patch Panel (PROD-SS-TRAPP)
TERA Patch Cords (PROD-SS-TRAPC)

The Americas

Watertown, CT USA
Phone (1) 860 945 4200

Europe/Middle East/Africa

Surrey, England
Phone (44) 0 1932 571771

Asia/Pacific

Shanghai, P.R. China
Phone (86) 21 6390 6778

Japan

Tokyo, Japan
Phone (81) (3) 5437-1580

WWW.SIEMON.COM

ISO 9001
CERTIFIED

ISO 14001
CERTIFIED

